

# Disaster Assistance

A strong aid for a strong community

Contact us at:  
info@kienzlegroup.de or Mortiz Kienzle: +49 173 6749799



## This is Us

Our young and dynamic family business, headquartered in Ehingen (Donau) near Ulm (Baden-Württemberg), has been active across various tasks throughout Germany since 2013. Since July 2021, we have also specialized in disaster assistance in flood and inundation areas.

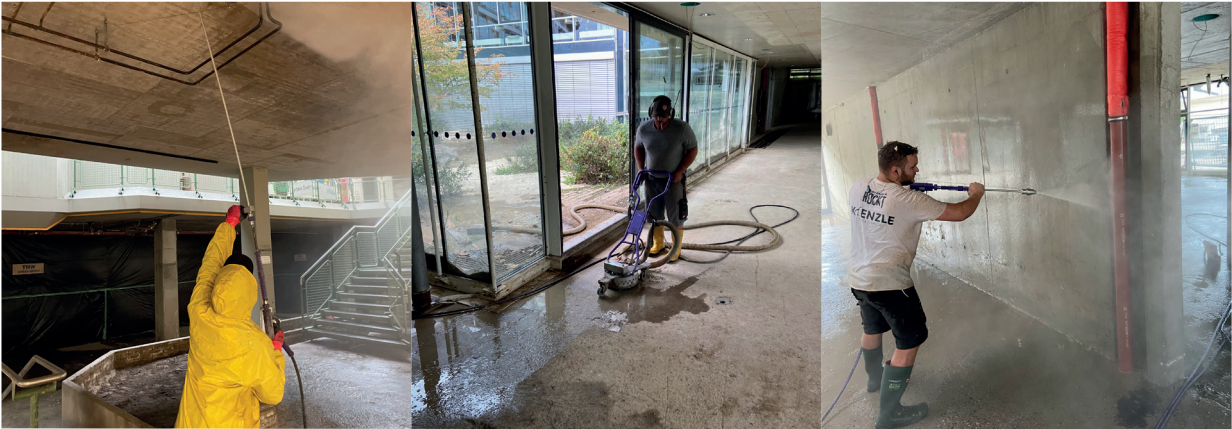
In the past two years, we have achieved significant results in the Ahrweiler region in Rheinland-Pfalz with several task forces of up to 50 people. With great dedication and expertise, we have been able to make a noticeable and sustainable contribution to the restoration of infrastructure in schools, public buildings, and private facilities.

## During this time, we have specialized in the following services

- Effective removal of mud and debris using wheel loaders, telescopic loaders, trucks, and tractors
- Use of wastewater pumps to counter flooding
- Expert core removal and demolition work
- Reliable securing work
- Provision of essential infrastructure, including power generators ranging from 15 kVA to 400 kVA, light towers, and power supply facilities
- Establishment of temporary shelters for up to 800 people
- Professional high-pressure cleaning up to 500 bar
- Targeted cleaning of buildings against mold, dirt, and algae
- Precise excavation work using mobile and crawler excavators
- Removal of waste and debris using roll-off containers
- Use of drying equipment and water vacuums
- Application of ozone devices



## Insight into Our Activities



Professional high-pressure cleaning up to 500 bar indoors.



Targeted cleaning of buildings against mold, dirt, and algae.



Professional high-pressure cleaning outdoors.



Roll-off containers for waste and construction debris disposal.



Use of drying equipment

## Overview of Our Equipment

With our versatile fleet of vehicles and machines, we are well-equipped to efficiently and professionally handle a wide range of tasks in the field of disaster assistance and restoration.

Our extensive selection of construction equipment, tools, and vehicles enables us to act flexibly and effectively in various situations and to tailor our services optimally to specific requirements.

### Vehicles and Machines

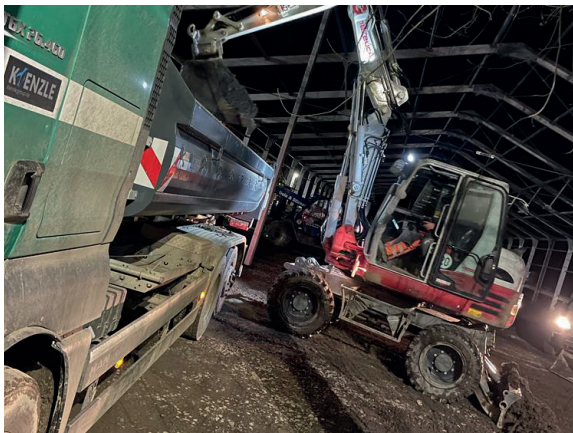
- 3 telescopic loaders (each with a capacity of 1.2 tons)
- 1 Roto telescopic loader with a height of 21 meters (capacity of 6 tons)
- 1 wheel loader (capacity of 2.5 tons)
- 1 Manitou rough terrain forklift (lifting capacity of 5.0 tons)
- Various excavators:
  - 1 excavator (operating weight of 1.6 tons)
  - 1 excavator (operating weight of 4.0 tons)
  - 1 wheeled excavator (operating weight of 10.5 tons)
  - 1 wheeled excavator (operating weight of 16.5 tons)
  - 1 rubber-tracked excavator (operating weight of 18.6 tons)
- Tracked carrier (60 HP) with forestry mulcher, milling machine, water pump, or back blade
- 2 tractor-trailers with roll-off trailers for material and container transport
- 12 roll-off containers for flexible storage and transport
- 250 HP powerful tractor with earthmoving bucket
- Swap body truck and up to 12 swap bodies (material containers)

## Tools

- Over 60 Hilti machines, from demolition hammers to cordless screwdrivers
- Core drilling machines and concrete saws
- Mobile scaffolding for versatile working conditions

## Wet Machines

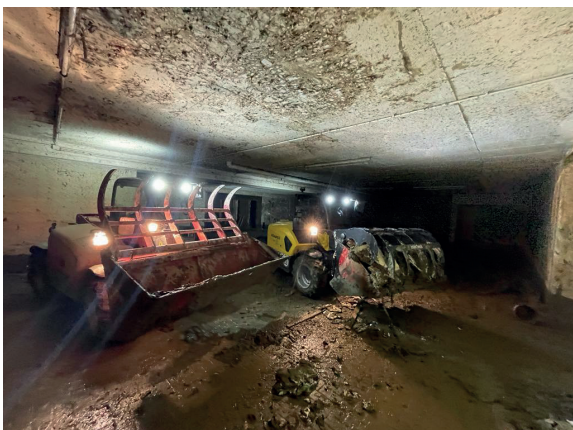
- Up to 7 Falch high-pressure cleaners with 500 bar
- 8 wet vacuums
- B and C hose pumps
- Dirty water lifting systems



Transport Using Roll-off Containers



Provision of essential infrastructure, including power generators



Removal of mud and debris using 2 of our telescopic loaders



Disposal of construction debris using telescopic loaders

## Insight into Our Activities



With the telescopic loader, work at heights of up to 21 meters is possible



Disposal of construction debris with our roll-off trailers



Cleaning of outdoor areas



Transport of construction debris, mud, and other debris using earthmoving buckets



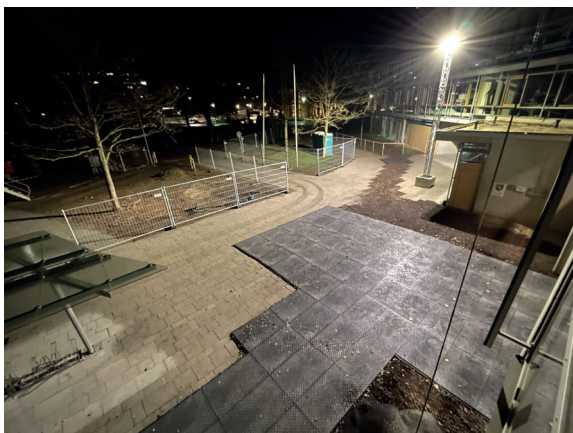
A brief look into our fleet

## Infrastructure Support

In the event of infrastructure collapse, quick action is crucial. By providing essential tools for survival, we can rapidly respond to such situations and offer tailor-made solutions.

### Our support includes:

- Power generators from 15 to 400 kVA
- Diesel filling stations and refueling facilities
- Power distribution units and metering cabinets up to 600A
- High mast lights up to 10m height (without generator)
- Over 2000 mobile fences and 500 barriers for various applications
- Over 4000 rubber floor mats for secure work areas
- Cable and hose bridges to prevent tripping hazards



High mast lights up to 10m height and rubber floor mats for secure work areas



Reliable safety measures with our mobile fences

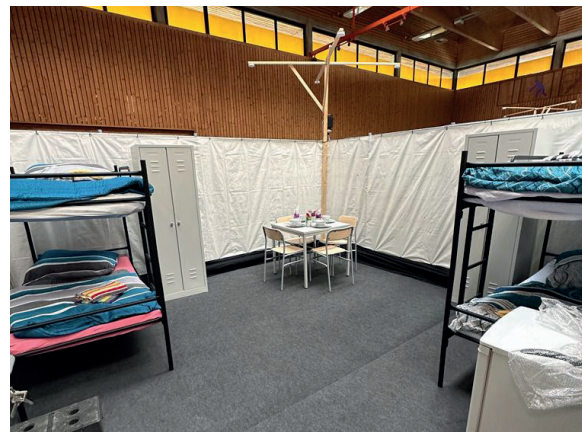
## Insight into Our Activities



Power distribution units and metering cabinets up to 600A



Establishment of temporary emergency shelters



### Contact us at:

info@kienzlegroup.de  
or Moritz Kienzle:  
+49 173 67 49 799

**Kienzle Event GbR**  
www.kienzlegroup.de  
Spitalstraße 1/1  
89584 Ehingen (Donau)



Filling Sandbags